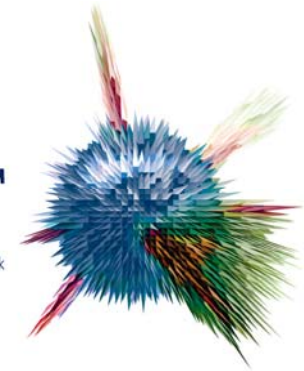


# STEM Programme Report – improving access to STEM support.

Yvonne Baker  
Chief Executive  
SETNET

# STEM Programme Report

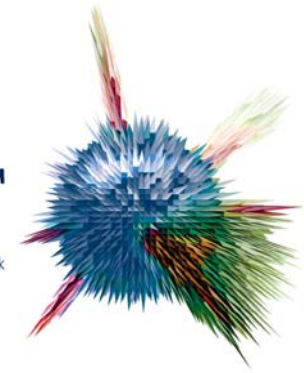
**SETNET**  
Science, Engineering, Technology and Mathematics Network



- Key co-ordination roles given to –
  - SETNET – for STEM Enhancement & Enrichment
  - Network of Science Learning Centres – for Science CPD
  - NCETM – for Maths CPD
- The report underlines the importance of understanding the impact of offerings through appropriate evaluation
- It also emphasises need to move balance from ‘supplier-driven’ to ‘demand-led’ by better understanding of schools’ & colleges’ agendas and needs, and providing appropriate support.

# Critical Success Factors moving forward

SETNET  
Science, Engineering, Technology and Mathematics Network

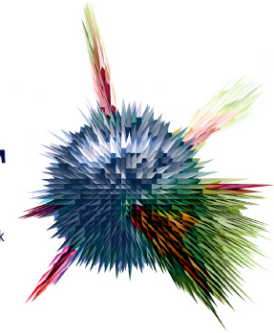


- Building on good foundations that exist – ‘not throwing the baby out with the bathwater’ ;
- Intelligent networking – creating opportunities for collaboration and then using them ;
- Being brave - ‘pairing of unlikely partners’ ;
- Listening to teachers and young people ;
- More joined-up thinking in Government (backed up by joined-up action!) ;
- Linking national and regional priorities with bottom-up good practice.



# After School Science & Engineering Clubs

SETNET  
Science, Engineering, Technology and Mathematics Network

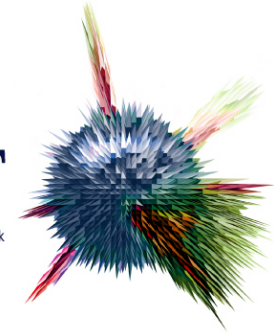


- Announced in 2006 Budget ;
- Pilot will lead to 250 Clubs across England in schools selected by DfES ;
- Lead client is DfES, but strong cross-Government support ;
- Consortium delivering pilot includes SETNET, SLCs, SSAT, The BA, ASE and Ecsite-UK ;
- Key content partners currently include BA, RAEng, Young Engineers, BEST Programme ..... more are welcome, please contact Jo Watts at SETNET.



# Key Features

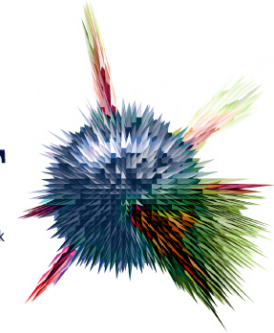
SETNET  
Science, Engineering, Technology and Mathematics Network



- All Clubs should be multi-disciplinary – involving staff and concepts from across S, T, E and M ;
- All Clubs offered training for leaders and support staff ;
- Clubs encouraged to utilise existing schemes and support mechanisms, including local delivery partners, where appropriate – for example, Young Engineers Clubs registration ;
- Variety of support mechanisms – Clubs co-ordinator, regional networks, involvement of LAs.

# Progress so far

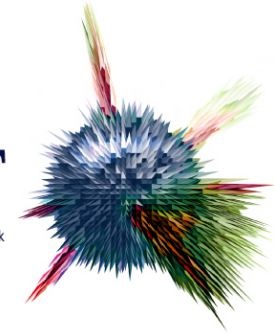
SETNET  
Science, Engineering, Technology and Mathematics Network



- Hugely enthusiastic reaction from schools ;
- 216 out of 250 Clubs confirmed in time for launch during NSEW 2007 ;
- Train the Trainer event held at NSLC, induction support for Clubs Leaders now being rolled out through RSLCs ;
- Web site live and Clubs co-ordinator engaged ;
- Excellent support from consortium partners and content partners – but more always welcome ;
- Business & Industry keen to know how they can help.

# What do the schools think?

SETNET  
Science, Engineering, Technology and Mathematics Network



- The funding for our Club will enable our teachers to make a big impact on the children by making the learning exciting and practical. The long-term gain for the school and the community has to be to develop the skills of the pupils in order to equip them better for study at A-level in the science and engineering field.”*

**David Day, Head of Wrotham School**

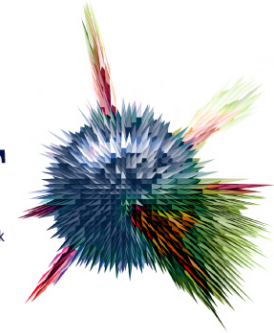
- Thank you! I am delighted! I have already put things in motion and the engineers from industry, organised by Malcolm Potter, are visiting on Friday. We were going to go ahead on a shoestring but this will make it all so much easier and challenging! Great!!!*

**Liz Croy, Deputy Head and Science Dept, The Newlands Catholic School**



# What happens next?

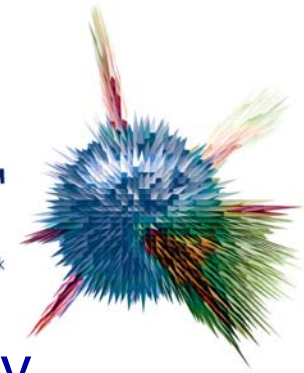
SETNET  
Science, Engineering, Technology and Mathematics Network



- Most on the ground Club activity will start September 07 ;
- Employers including GE, Rolls-Royce, Thales, NPower and Qinetiq have already committed to support Clubs in a variety of ways – now looking at how to make this happen in best way to support schools ;
- Early and on-going work on emerging good practice to allow this to be disseminated effectively to pilot Clubs and beyond to other interested schools.

# Shape the Future (formerly known as TESS!)

**SETNET**  
Science, Engineering, Technology and Mathematics Network



- Collection of largely Engineering and Technology focused schemes – result of 18 months work with E&T communities to provide a ‘united front’ to schools and colleges ;
- Currently includes over 35 schemes with varied profiles in terms of age, duration, intensity and subject ;
- More schemes and activities welcome – please contact Dave Rowley or Matthew Harrison at RAEng.