



NATIONAL  
**SCIENCE &  
ENGINEERING  
WEEK**

9-18  
MARCH  
2012



## National Science & Engineering Week: Be part of it!

A national celebration with events and activities to inspire people of all ages with the wonders of the sciences and engineering.

[www.nsew.org.uk](http://www.nsew.org.uk)

Funded by:

**BIS**  
Department for  
Business, Innovation  
and Skills

In partnership with:

 **EngineeringUK**

# WHAT IS NATIONAL SCIENCE & ENGINEERING WEEK?

---



CLAIRE MURRAY,  
PHD STUDENT AND  
VOLUNTEER, MAKING  
SLIME WITH MEMBERS  
OF THE PUBLIC IN  
READING DURING  
NATIONAL SCIENCE  
& ENGINEERING  
WEEK 2011.

**National Science & Engineering Week** is a 10-day celebration of the sciences, engineering and technology.

Coordinated by the British Science Association in partnership with a community of organisers, **National Science & Engineering Week** provides a platform for a wide range of organisations to reach out to their communities. Events and activities during the Week create opportunities for people of all ages and abilities to experience the wonders of the sciences, engineering and technology.

From school science activity days to museum and art gallery events, the British Science Association provides support to all kinds of participating organisations. Our themes and funding, high-quality resources and activity ideas help organisers to create and deliver highly participative and engaging events and activities every March.

**National Science & Engineering Week** takes place from 9–18 March 2012 with the theme **"Our World in Motion."**

[www.nsew.org.uk](http://www.nsew.org.uk)



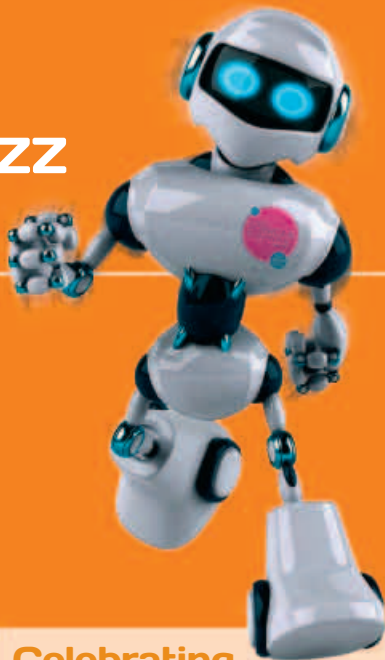
# BE PART OF IT: CREATE THE BUZZ IN YOUR AREA!

**National Science & Engineering Week** is for all ages and abilities; your organisation can join our partnership of event and activity organisers and create the buzz in your local area. Whether you run a carousel of hands-on activities in school, plan a coffee morning for a local community group or run an exhibition for thousands, every event and activity counts towards our goal of generating a national focus on the sciences and engineering each March.

## Register on our online programme

To be part of the celebration just register your own events or activities on our online events programme. Both public and private events are welcome, including school activity days. We aim to drive people to our programme to find out what is happening near them.

[www.nsew.org.uk](http://www.nsew.org.uk)



## Celebrating success: building on 18 years

Celebrating its 18th Birthday in 2012, **National Science & Engineering Week** grows from strength-to-strength each year. In 2011, **National Science & Engineering Week** reached new highs with:

- 1.7 million participants at 4,500 events and activities organised by over 2,000 separate organisations, 68% of which were schools.
- 10,500 volunteers across 10 days.
- Over £1m worth of national and regional media coverage from events and activities.
- 57% of over 16's polled were attending science engagement events or activities for the first time in 12 months; 89% of those agreed they increased their interest in and understanding of the sciences and engineering.



# FROM THE BRITISH SCIENCE ASSOCIATION:



## The Great Global Adventure

This out-of-the-box poster competition is a simple way to take part in National Science & Engineering Week, either as homework or a class project.

The British Science Association is launching an ideas challenge for 5 – 14 year olds asking them to invent a multi-terrain global racer that uses renewable power.

Pupils will need to invent one method of transportation that can carry themselves and two friends across a range of challenging terrains in their global adventure! The race could last many weeks, so vehicles will need to be large enough to carry supplies.

Racers must be presented in the form of a poster with a drawing of the invention accompanied by an explanation of how it works. Full teacher's notes will be provided. Entries will be judged by a panel and the best researched and explained in each category will win a selection of prizes.

The closing date for all postal entries will be Monday 2nd April 2012. For full details visit:

[www.nsew.org.uk](http://www.nsew.org.uk)

## Download activity packs and quizzes

National Science & Engineering Week activity packs provide you with a range of educational and fun experiments to help you deliver excellent STEM enrichment.

Inspire young minds and create a buzz with simple and effective hands-on experiments along with project ideas and investigations from the British Science Association. With over 260 separate activities to choose from for under 11's and over 11's, packs are curriculum-linked and include organisers' notes.

Discover how things move in the world around us with resources that can be sourced cheaply and easily using the new "Move It!" hands-on activity pack for 2012. With a mixture of short, fun experiments alongside CREST Star Investigator-accredited investigations, "Move It!" offers something for a wide variety of ages and abilities.

[www.nsew.org.uk](http://www.nsew.org.uk)



# OUR WORLD IN MOTION PROVE IT!

## Fancy yourself as a science presenter? Explain our world in motion in 30 seconds.

Our world is constantly in motion, from the ground beneath our feet to the clouds above our heads – everything around us moves. To demonstrate online how our world moves, we want to collect as many stories of our world in motion as we can. Enter our competition for all ages and film yourself explaining one aspect of our world in motion in 30 seconds. The winners will be announced during National Science & Engineering Week 2012.

## School prize draw

A selection of prizes are available to schools that register their National Science & Engineering Week activities on the event programme by February 10th 2012. We want to hear about everything that's happening, so whether your activities are for the whole community or a science-themed afternoon for one class – please let us know your plans.

## Your school could win:

One of 30 Kids Lab Science Kits plus Cosmic Ball for Primary Schools or one of 30 Ticker Tape Timers for Secondary Schools from Timstar Laboratory Suppliers Ltd

[www.timstar.co.uk](http://www.timstar.co.uk)

One of 60 copies of "The Story of Astronomy and Space" from Usborne

[www.usborne.com](http://www.usborne.com)

One of 60 £20 LEGO Education vouchers

[www.legoeducation.eu](http://www.legoeducation.eu)

One of two EducationCity.com primary pack subscriptions (English, Maths, Science KS1-2) – "the leading online teaching and learning assessment resource".

[www.educationcity.com](http://www.educationcity.com)

School Prize Draw sponsors:



education



# SUPPORTING YOUR EVENTS AND ACTIVITIES:

---

## How-to-guides for beginners

If you are on the hunt for funding, publicity ideas, or just a step-by-step planning guide, then our how-to-guides will help take some of the work out of planning events and activities. Designed with beginners in mind and easily accessible online, download with our inspirational event and activity case-studies and the "**Science on a Shoestring**" guide to gain years of experience in one go.

## Apply for an event award

To reward the passion of event organisers for engaging their schools and communities, the **National Science & Engineering Week Event Awards** recognise the very best events and activities during the Week, with support from EngineeringUK. A prize of up to £600 is on offer to our Event Award winners in 2012 – this is your chance to showcase your own efforts during National Science & Engineering Week. Nominate your own events and activities by 6th February 2012.

## Be in our regional media releases

We will be sending out local press releases of the highlight events in each region just before National Science & Engineering Week kicks off in March. All public events and activities registered on our programme by 17th February will be considered. If you have something you think is particularly newsworthy, get in touch and let us know.

[nsew@britishscienceassociation.org](mailto:nsew@britishscienceassociation.org)

## Roll-up for the one-stop science shop!

For t-shirts for your volunteers, pin badges, prizes, gifts and give-aways, check out the **National Science & Engineering Week** online shop. Opening in December, all items are available at cost price and will be delivered in time for your events and activities. Place your orders by 17th February 2012.

## Your free pack of marketing materials

Branding is vital to the success of **National Science & Engineering Week**, so we have created a range of promotional posters, bookmarks and stickers for your events and activities. Distributed free of charge in February, these are sent out on a first-come-first-served basis.

But hurry, stocks are limited so get in quick!

For online promotion or if you prefer to stick to your own designs, you can download **National Science & Engineering Week** logos in a range of formats, including English–Welsh bilingual logos.

For further information visit: [www.nsew.org.uk](http://www.nsew.org.uk)

# NATIONAL PROJECTS FROM OUR PARTNERS:



## Free curriculum-linked experiment kits for schools

In the Zone is the Wellcome Trust's major UK-wide initiative inspired by the London 2012 Olympic and Paralympic Games. It provides a fun, free and fascinating way to bring the science of the human body to life in the classroom. FREE experiment kits brimming with high-quality practical equipment and supporting resources will be posted to every UK school and FE college in February and March 2012. Linked to the science and PE curricula for ages 4 – 19, experiments are designed to help students explore the science of how the human body works during exercise, movement, performance and rest.

[www.getinthezone.org.uk](http://www.getinthezone.org.uk)



## Meet museum scientists from the classroom

The Natural History Museum are offering interactive video conferences to allow your pupils to meet museum scientists from their classroom. Sets of three Spring term sessions, each covering biodiversity content, will demonstrate the process of scientific fieldwork. Pupils will be able to ask questions about planning, collecting data, and interpreting results. The final session will take place in National Science & Engineering Week, and the Natural History Museum has supporting resources to inspire your pupils to carry out their own investigations. For more information contact Grace Kimble:

[videoconferencing@nhm.ac.uk](mailto:videoconferencing@nhm.ac.uk)

## Tomorrow's Engineers

### Making wise choices about brilliant new careers

Engineering is a key part of a range of industries, including music, TV and film, construction, transport, cosmetics, medicine, food, fashion and much more. Tomorrow's Engineers gives young people and teachers the information and resources they need about subject choices and the exciting engineering careers that they can lead to. To access new videos, activities and careers case-studies visit:

[www.tomorrowsengineers.com](http://www.tomorrowsengineers.com)



# LOOKING FOR A SCIENCE PRESENTER?

## sciencelive

the science presenters' directory

The online ScienceLive directory is your springboard to accessing over 270 presenters from across the UK for your events and activities.

**National Science & Engineering Week** is a very busy time for presenters, that's why we created the ScienceLive directory – to help you find the most suitable science and engineering communicators for your events and activities.

[www.sciencelive.net](http://www.sciencelive.net)

## Why choose ScienceLive:

- Over 270 presenters, workshop leaders or speakers to choose from.
- Search by topic area, audience type or region. Trust user reviews and star ratings to help you choose the best for your audience.
- Check whether presenters are CRB checked or a STEM Ambassador.
- It's free, ScienceLive doesn't charge a booking fee – you can contact presenters directly.

## Tell me more:

For further details of **National Science & Engineering Week**, please visit our website where you can view all our projects and initiatives. Sign-up to receive our regular e-newsletter containing details of all the latest activities and opportunities to get involved with the UK's widest celebration of the sciences and engineering.

### Online

[www.nsew.org.uk](http://www.nsew.org.uk)

### Email us

[nsew@britishscienceassociation.org](mailto:nsew@britishscienceassociation.org)

### Find us on Facebook

[www.facebook.com/ScienceWeekUK](http://www.facebook.com/ScienceWeekUK)

### Tweet us

[www.twitter.com/ScienceWeekUK](http://www.twitter.com/ScienceWeekUK)



National Science & Engineering Week is funded by the Department for Business, Innovation and Skills and works in partnership with EngineeringUK.

The British Science Association is a Registered Charity no: 212479 and SC039236.

